



Nathan's Bay

Lakowe-Lekki, Lagos

Waterfront
Communities,
Redefined

Featuring

3

Distinct
Communities



**Jubilation
Retirement Estate**

Olivia's View

Bayfront Villas

Estate Layout



Behind the blueprint

NATHAN'S BAY unfolds across a picturesque waterfront landscape, with 40% dedicated to lush greenery, offering expansive 300 and 500 sqm plots for 55+ active adults, young families, homeowners, and investors.

Surrounded by iconic landmarks like **Novare Mall**, **Lagos Business School**, **Lakowe Golf Club**, and **Omu Resorts**, it provides impeccable infrastructure for building dream homes, securing investments, or enjoying an elevated lifestyle.

NATHAN'S BAY – Waterfront Communities, Redefined.





Lifestyle Enhancements



Eco
Community



Recreational
Facilities



Club
House



Swimming
Pool



Sports
Arena



Good Road
Network

A photograph of two women sitting by a swimming pool, laughing and clinking glasses. The woman on the left is wearing a pink sleeveless top and a large straw hat, holding a glass with a drink and a straw. The woman on the right is wearing a patterned top and a white hat, also holding a glass. They are both smiling broadly. The background is a lush green hedge.

Coming into Nathan's Bay,
your first sight will be

Jubilation Retirement Estate

...your next chapter, redefined

Decorative wavy lines in the bottom left corner of the page.

More on Jubilation Retirement Estate



2 Bedroom Semi Detached



3 Bedroom Fully Detached Villa



3 Bedroom Fully Detached Villa With BQ

Lifestyle Enhancements



Elevator



Beauty salon



Library



Convenience Store



Recreation Hall



Entertainment



Church



Exhibitions and Conferences



Doctors' Consulting Rooms



Laundry

Jubilation Retirement Estate Layout



Next stop is
Olivia's View
...secure your future, one home at a time



There is more to Olivia's View



Gated
Entrances



Treated
Water



Paved and
Interlock
Common Areas



24 Hour
Security



Solar Street
Lights



Central
Refuse System



24-Hour Electricity
and Security

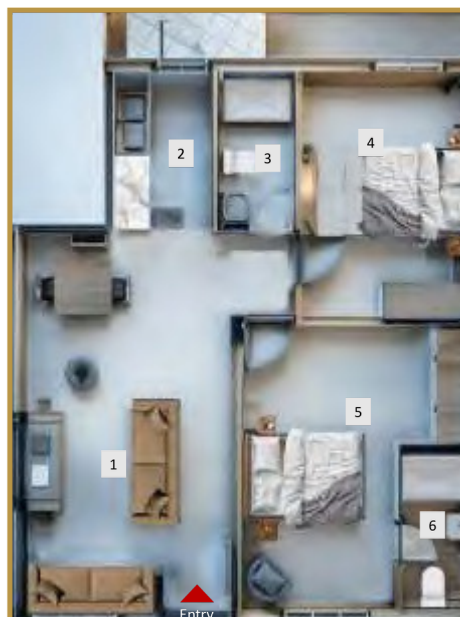


OLIVIA'S VIEW FLOOR PLANS

1 Bedroom Apartment



2 Bedroom Apartment



3 Bedroom Apartment



3 Bedroom Maisonette with BQ



First Floor Layout

3 Bedroom Maisonette with BQ



Second Floor Layout

1 Bedroom Apartment (45m²)

1 Living / Dining	21m ²
2 Visitor's Toilet	4m ²
3 Kitchen	6m ²
4 Bedroom	14m ²

2 Bedroom Apartment (67m²)

1 Living/Dining Room	25m ²
2 Kitchen	5m ²
3 Bathroom	3m ²
4 Bedroom	14m ²
5 Master Bedroom	16m ²
6 Master Bath	4m ²

3 Bedroom Apartment (92m²)

1 Living / Dining	27m ²
2 Kitchen	9m ²
3 Master Bedroom	15m ²
4 Master Bath	4m ²
5 Bedroom 1	13m ²
6 Bathroom	4m ²
7 Bedroom 2	14m ²

3 Bedroom Maisonettes with BQ (122m²)

First Floor Layout

1 Living / Dining Room	32m ²
2 Kitchen	8m ²
3 Store	2m ²
4 Visitor's Toilet	1m ²
5 Maid's Room	9m ²
6 Staircase	

3 Bedroom Maisonettes with BQ (122m²)

Second Floor Layout

1 Master Bedroom	17m ²	4 Bathroom	4m ²
2 Master Bath	4m ²	5 Bedroom 2	15m ²
3 Bedroom 1	10m ²	6 Staircase	



Final stop is
Bayfront Villas

.....your life, your terms

There's more to Bayfront Villas



Drainage
System



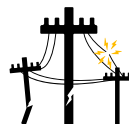
Green Park



Ample
Parking



Portable
Water



Power
Supply



CCTV
Surveillance



Elite
Security



Plot sizes:

300 SQM | 500 SQM



Own Your Dream Home at Nathan's Bay

— Without the Stress



At AXP, we believe that owning a home shouldn't be complicated or overwhelming. That's why we've simplified the process to make it easy, seamless, and tailored just for you.

All you need is a 30% equity contribution—and we'll take it from there.

We'll work closely with you to:

- Create a personalized payment plan that fits your income and lifestyle
- Provide mortgage support and flexible financing options
- Ensure a smooth process from first deposit to final handover

Whether you're buying your first home, investing for the future, or retiring into comfort, our goal is to make your journey stress-free and achievable.

At Nathan's Bay, you don't just buy property—you gain peace of mind.



CONTACT:
0902-621-1153, 0201-889-0888

LAGOS:
52 Ahmadu bello Way, Victoria island, Lagos